



**ސަލާމަތުގެ ޖަލްޞާޔާގެ ޖަލްޞާޔާގެ ޖަލްޞާޔާ**

މާލdives ސަރުކާރުގެ ގެޒެޓް ގައި ބަޔާންކުރި ޖަލްޞާޔާގެ ޖަލްޞާޔާގެ ޖަލްޞާޔާ	ޖަލްޞާޔާގެ ޖަލްޞާޔާ:
(IUL)266-PR/266/2025/25	ޖަލްޞާޔާގެ ޖަލްޞާޔާ:
05 ޖުލައި 2025	ޖަލްޞާޔާގެ ޖަލްޞާޔާ:

**1. Approx distance from indoor unit to outdoor unit for each.**

- All pipe lines (Gas lines and Drain pipe-lines) are shown in the drawings for clear understandings. (However, the dimensions might not be very accurate.

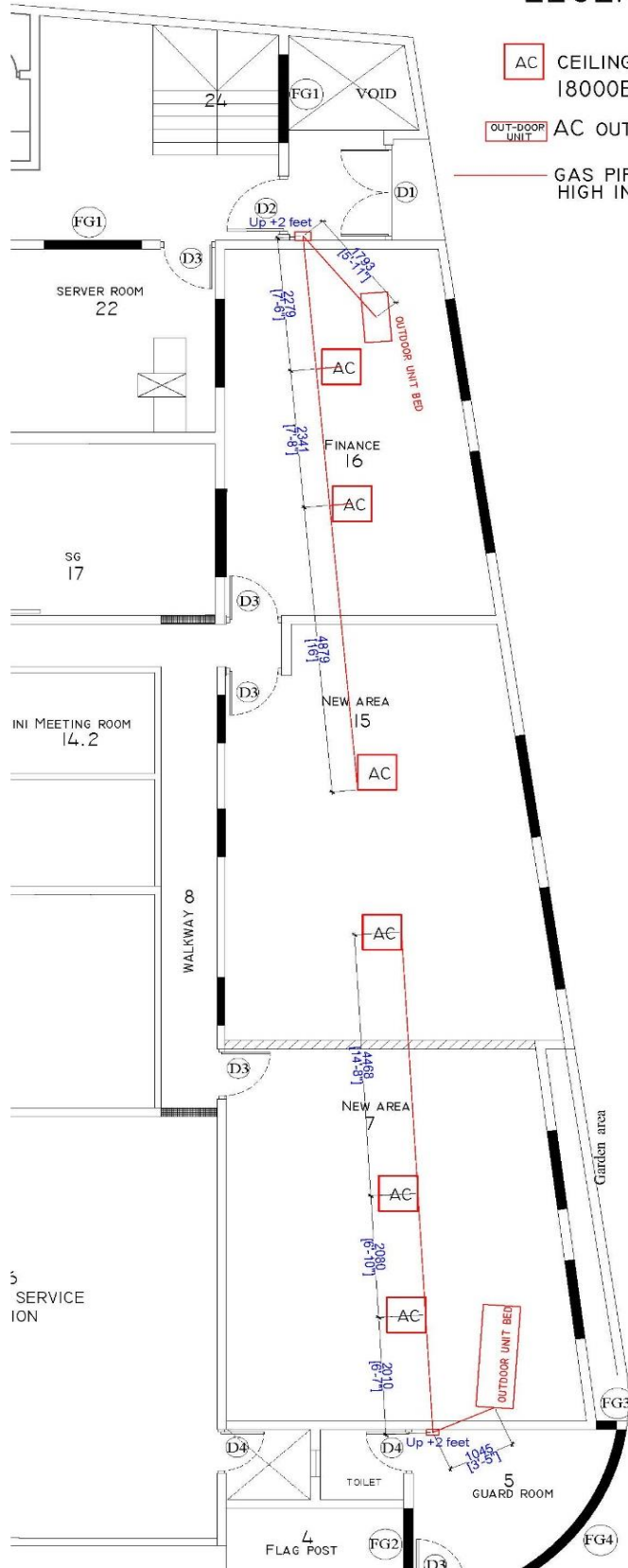


LEGENDS:

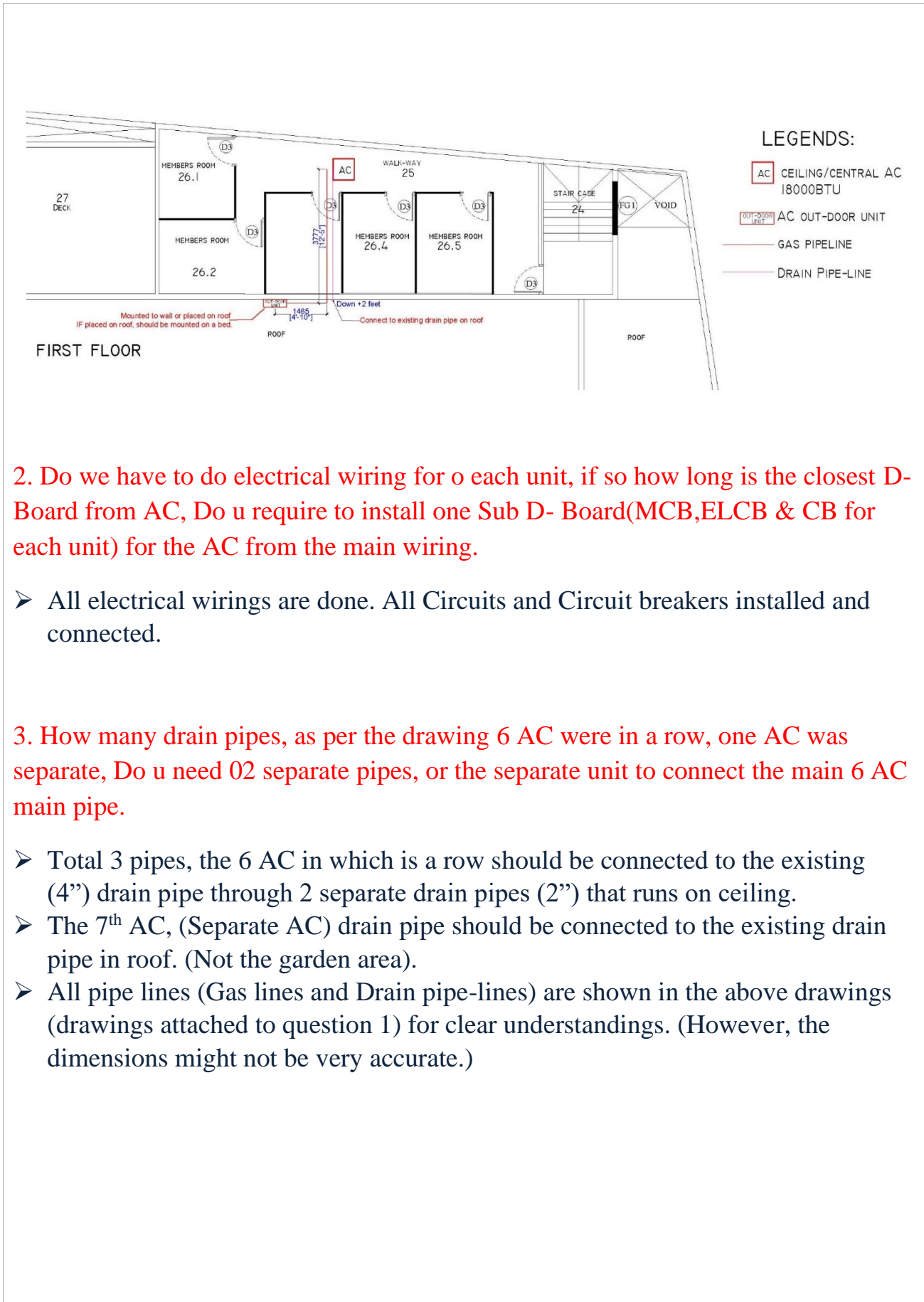
AC CEILING/CENTRAL AC  
18000BTU

OUT-DOOR UNIT AC OUT-DOOR UNIT

GAS PIPELINE HIGH INSULATION







2. Do we have to do electrical wiring for o each unit, if so how long is the closest D-Board from AC, Do u require to install one Sub D- Board(MCB,ELCB & CB for each unit) for the AC from the main wiring.

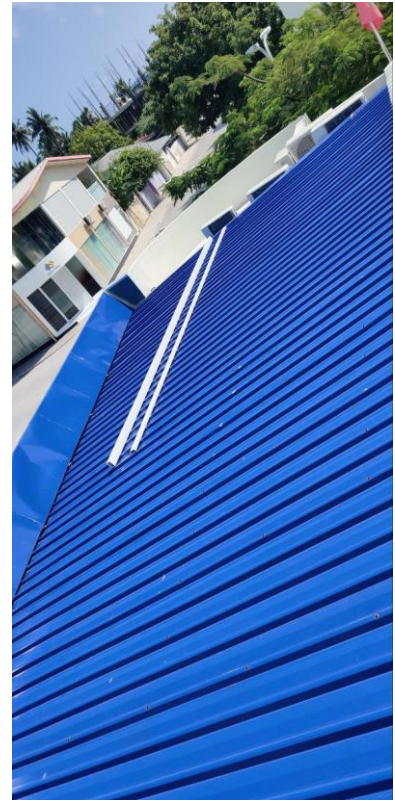
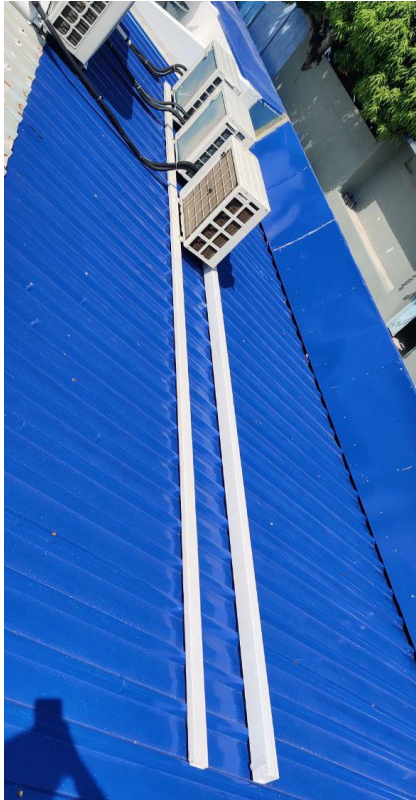
➤ All electrical wirings are done. All Circuits and Circuit breakers installed and connected.

3. How many drain pipes, as per the drawing 6 AC were in a row, one AC was separate, Do u need 02 separate pipes, or the separate unit to connect the main 6 AC main pipe.

- Total 3 pipes, the 6 AC in which is a row should be connected to the existing (4") drain pipe through 2 separate drain pipes (2") that runs on ceiling.
- The 7<sup>th</sup> AC, (Separate AC) drain pipe should be connected to the existing drain pipe in roof. (Not the garden area).
- All pipe lines (Gas lines and Drain pipe-lines) are shown in the above drawings (drawings attached to question 1) for clear understandings. (However, the dimensions might not be very accurate.)

#### 4. Outdoor unit installation bed drawing or a picture of existing bed.

- The bed is made using 2 rectangular Hollow sections. Adjusting to the outdoor unit's size and placement.
- The bed should be mounted to roof, in-line/ using the same screws on the roof.
- Photos of the existing bed is attached below.



#### 5. Can we submit the bid proposal for the Singer AC brand?

- The preferred AC brands are specified in Section 6, Clause 1.2 of the bid book.

#### 6. Can we submit the bid proposal for the Midea AC brand?

- The preferred AC brands are specified in Section 6, Clause 1.2 of the bid book.